



THE ARES CLOUD CATALOGUE



ImagedReality, develops immersive technologies with applications to Earth Sciences in Energy, Mining, Engineering and Academia. We help organisations collaborate and communicate complex environments, improve interpretations and create a better interaction between multi-disciplinary teams, resulting in better decision making, risk reduction and increased capital return. With our technology, users can create digital reservoir atlases and virtual core stores in immersive and collaborative environments, integrating data across different scales.

- **Stratbox®** is a SaaS (Software as a Service) platform which allows users to study and interpret reservoir analogues using 3D outcrop models, integrating data from regional to microscopic scale in a single 3D environment in which they can collaborate remotely. Stratbox® is available in Desktop (Windows and Mac) and VR versions.
- **Curated collections** of 3D outcrop models from RPS (global) and from ARES (Colombia) are accessible through Stratbox® (for an additional subscription which requires an active licence of the platform)
- **Virtual courses** in Stratbox® are available and taught by instructors experts in their field (access to the platform is included in the participant cost)
- **Stratbox® Core Explorer** is a web-based platform which facilitates organisations' on-demand access to their internal collections of well core and related data in an integrated manner through the automated upload of images and data of thin sections at the right depths, allowing users to collaborate in the description and interpretation of cores.

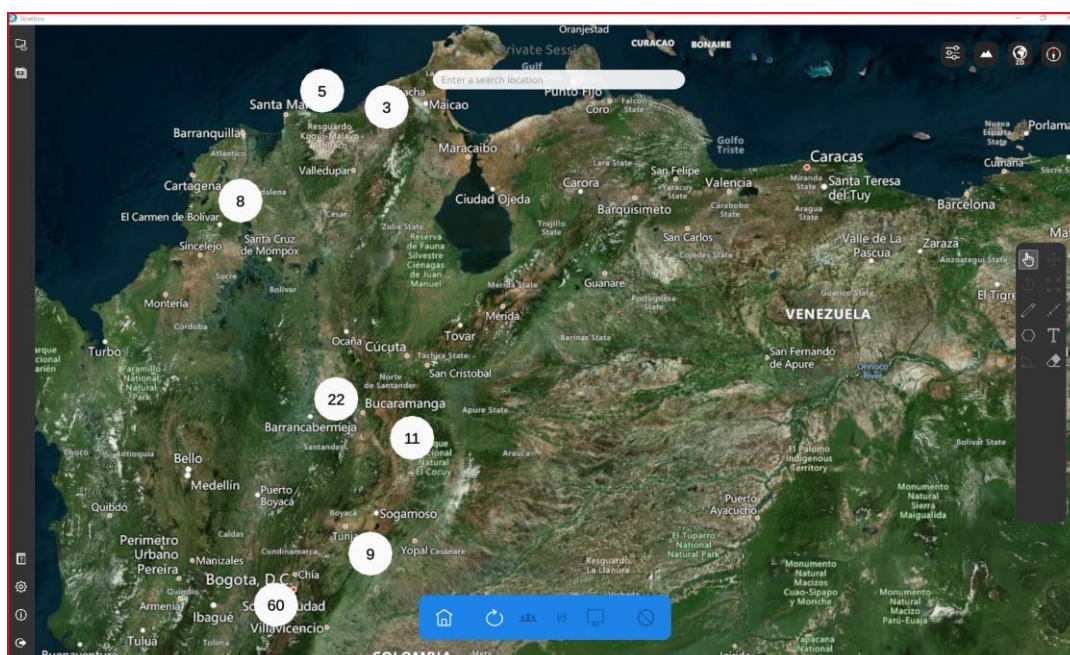


THE ARES COLLECTION

Imaged Reality, in collaboration with the Colombian geological firm, ARES, is bringing the Ares Catalogue of 3D outcrop models to Stratbox Desktop Cloud service. The catalogue is separated in 3 collections. The models cover basins of important geological interest for exploration and training of multidisciplinary teams.

The outcrop models are accessed directly in Stratbox Desktop after product subscription.

Terms and conditions of use apply.



Stratbox map showing the sum of all the ARES catalogues per region

ARES Collection 1



Collection 1

The 1st collection includes a list of 20 interpreted models from the **Cordillera**, **Middle Magdalena** and **Sinu** basins.

The models cover a combination of reservoir and source rock types from the whole spectrum of younger Neogene (*Miocene*) down to older Upper Cretaceous (*Cenomanian*) age.

These rock formations represent sedimentary environments from marginal (*delta, coastal and tidal plain*), marine (*shallow and deep marine siliciclastics and carbonates*) and continental (*fluvial channel, lacustrine delta and floodplain*).

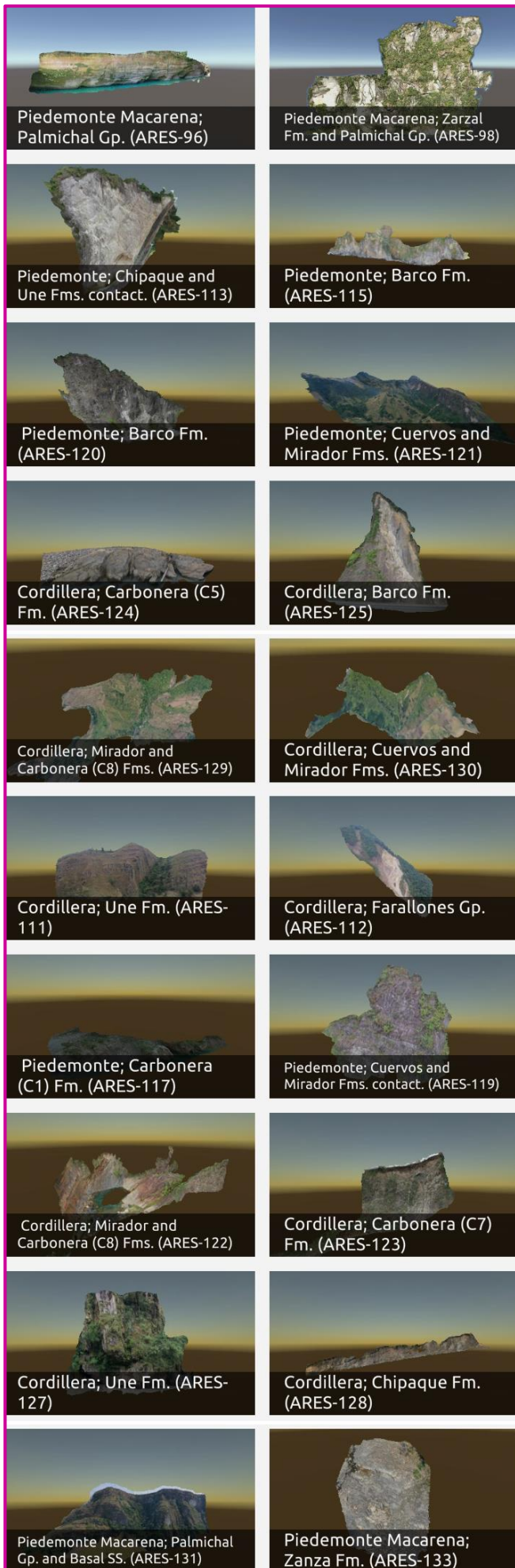
Included basins:

- 3 models from Cordillera basin
- 12 models from Middle Magdalena basin
- 1 model from Upper Magdalena basin
- 4 models from Sinu Magdalena basin

Covers formations and groups:

- Arenisca de Labor Fm.
- Arenisca Tierna Fm.
- La Paz Fm.
- Esmeraldas Fm.
- Mugrosa Fms.
- Colorado Fms.
- Lisama Fms.
- Olini Gp.
- San Juan de Rio Seco Fm.
- Cordoba Fms.
- Seca Fms.
- San Cayetano Fm.
- Cienaga de Oro Fm.
- Maco Fm.
- La Victoria Fm.
- Guaduas Fms.

ARES Collection 2



Collection 2

The 2nd collection includes a list of 20 more interpreted models from the **Piedemonte**, **Piedemonte Macarena** and **Cordillera** basins.

The models cover mostly reservoir and a seal rock type from Neogene (*Miocene*), mainly Paleogene (*whole spectrum*) as well as some older Cretaceous (*Apto-Albian to Turonian*), Devonian and Upper Ordovician age.

These rock formations represent sedimentary environments from marginal (*deltaic, estuarine*), marine (*shallow marine, turbidites*) and continental (*meandering and braided fluvial, fluvial deltaic, lacustrine*).

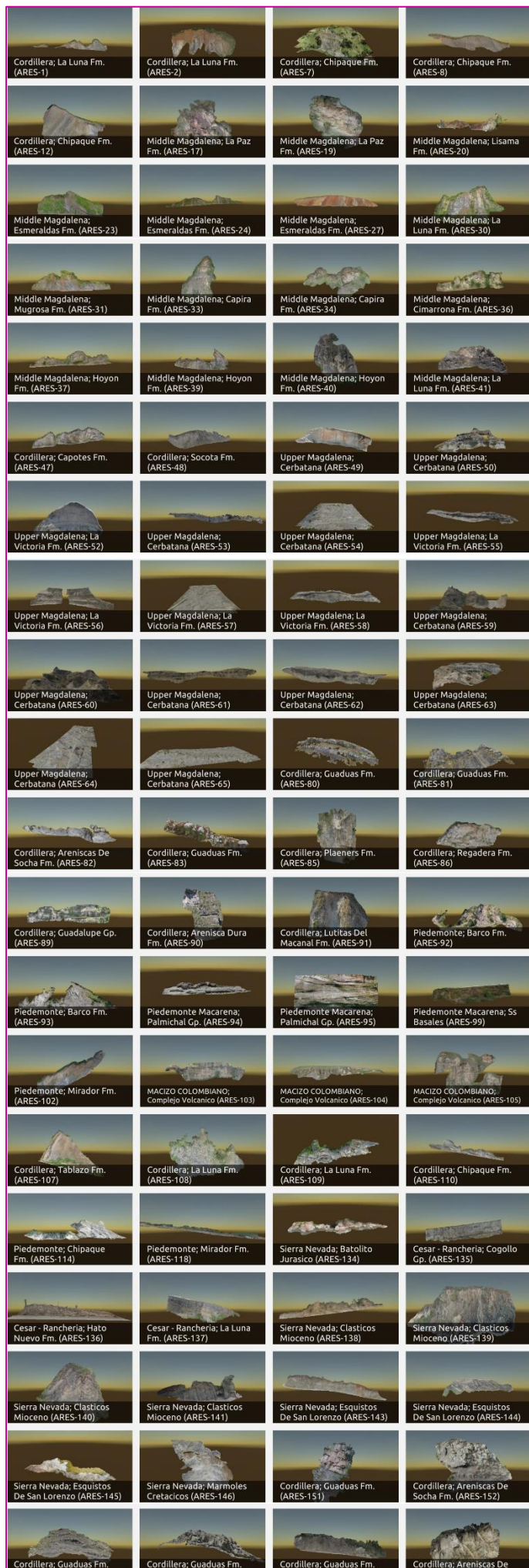
Included basins:

- 6 models from Piedemonte
- 4 models from Piedemonte Macarena
- 10 models from Cordillera

Covers formations and groups:

- Palmichal Gp.
- Basal SS.
- Zarzal Fm.
- Chipaque Fm.
- Une Fm.
- Farallones Gp.
- Barco Fm.
- Carbonera (C1) Fm.
- Carbonera (C5) Fm.
- Carbonera (C7) Fm.
- Carbonera (C8) Fm.
- Cuervos Fm.
- Zanza Fm.
- Mirador Fm.
- Zanza Fm.

ARES Collection 3



Collection 3

The 3rd collection includes a list of 81 models from **Cordillera, Middle Magdalena, Upper Magdalena, Piedemonte, Piedemonte Macarena, Macizio Colombiano, Cesar and Sierra Nevada** basins.

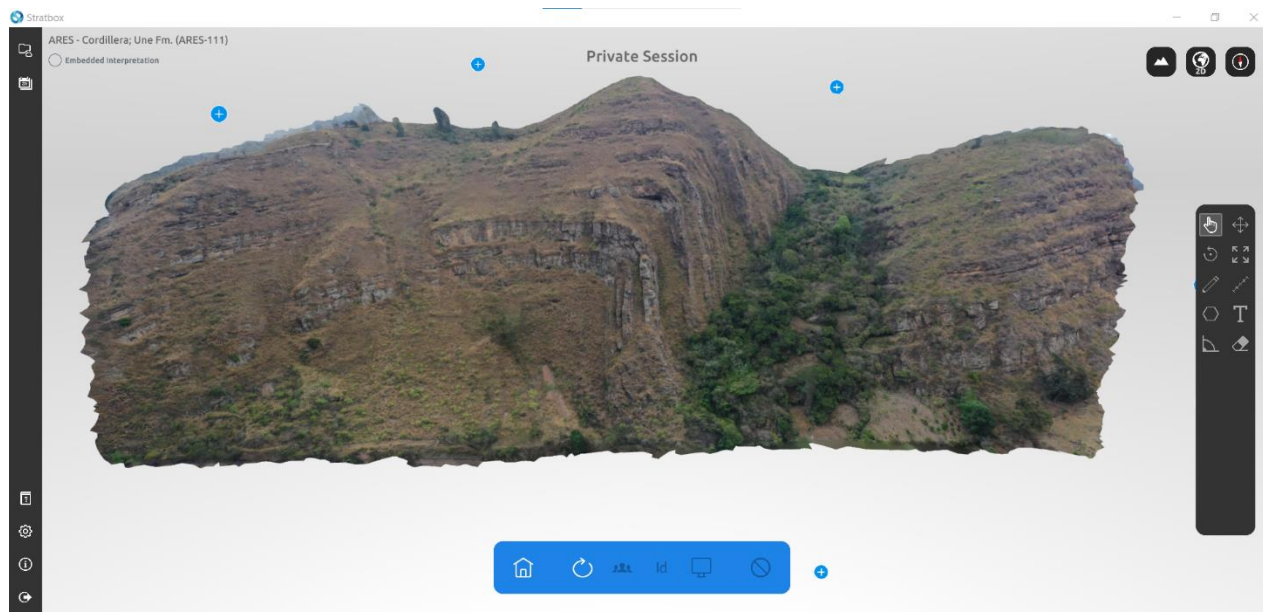
Included basins:

- 27 models from Cordillera
- 15 models from Middle Magdalena
- 16 models from Upper Magdalena
- 5 models from Piedemonte
- 3 models from Piedemonte Macarena
- 3 models from Macizio Colombiano
- 3 models from Cesar
- 9 models from Sierra Nevada

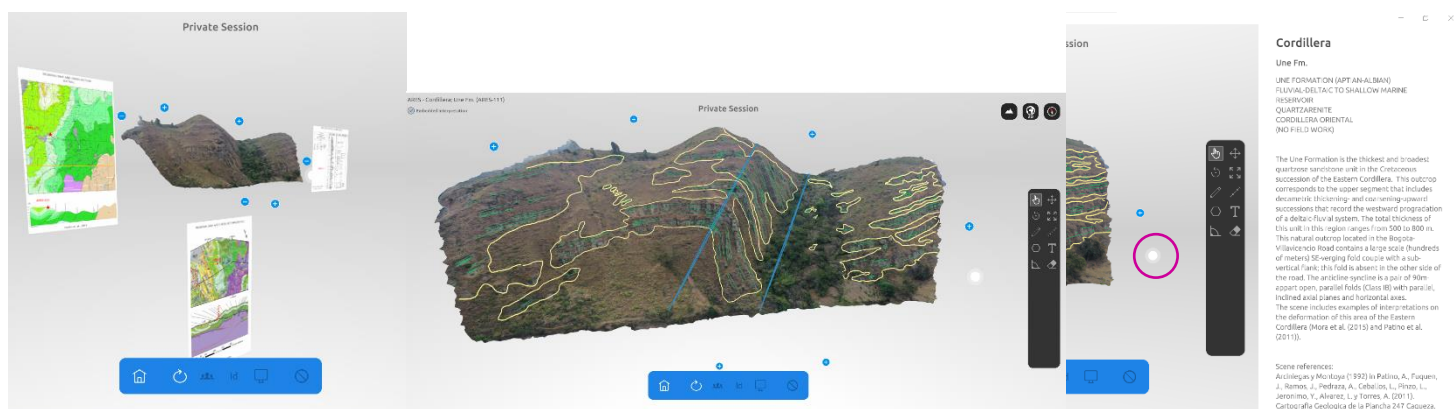
Covers formations and groups:

- Arenisca Dura Fm.
- Areniscas De Socha Fm.
- Barco Fm.
- Batolito Jurasico
- Capira Fm.
- Capotes Fm.
- Cerbatana
- Chipaque Fm.
- Cimarrona Fm.
- Clásticos Mioceno
- Cogollo Gp.
- Complejo Volcanico
- Concentracion Fm.
- Esmeraldas Fm.
- Esquistos De San Lorenzo
- Guadalupe Gp.
- Guaduas Fm.
- Hato Nuevo Fm.
- Hoyon Fm.
- La Luna Fm.
- La Paz Fm.
- La Victoria Fm.
- Lisama Fm.
- Lutitas Del Macanal Fm.
- Marmoles Cretacicos
- Mirador Fm.
- Mugrosa Fm.
- Palmichal Gp.
- Plaeners Fm.
- Regadera Fm.
- Socota Fm.
- Ss Basales
- Tablazo Fm.

ARES Interpreted Example



Uninterpreted model in Stratbox viewer



Images maps, logs, interpretations and associated hotspot description of the model