



THE DRONEXPLORA CLOUD CATALOGUE



ImagedReality

www.imagedreality.com

ImagedReality, develops immersive technologies with applications to Earth Sciences in Energy, Mining, Engineering and Academia. We help organisations collaborate and communicate complex environments, improve interpretations and create a better interaction between multi-disciplinary teams, resulting in better decision making, risk reduction and increased capital return. With our technology, users can create digital reservoir atlases and virtual core stores in immersive and collaborative environments, integrating data across different scales.

- **Stratbox®** is a SaaS (Software as a Service) platform which allows users to study and interpret reservoir analogues using 3D outcrop models, integrating data from regional to microscopic scale in a single 3D environment in which they can collaborate remotely. Stratbox® is available in Desktop (Windows and Mac) and VR versions.
- **Curated collections** of 3D outcrop models from RPS (global) and from ARES (Colombia) are accessible through Stratbox® (for an additional subscription which requires an active licence of the platform)
- **Virtual courses** in Stratbox® are available and taught by instructors experts in their field (access to the platform is included in the participant cost)
- **Stratbox® Core Explorer** is a web-based platform which facilitates organisations' on-demand access to their internal collections of well core and related data in an integrated manner through the automated upload of images and data of thin sections at the right depths, allowing users to collaborate in the description and interpretation of cores.

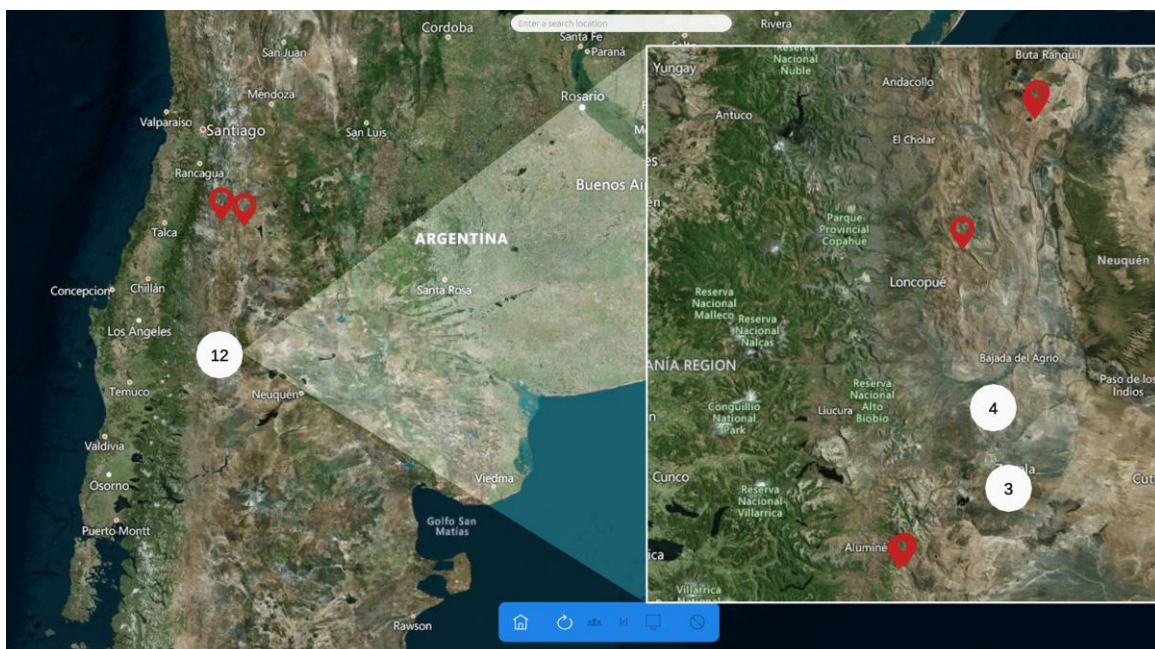


THE DRONEXPLORA COLLECTION

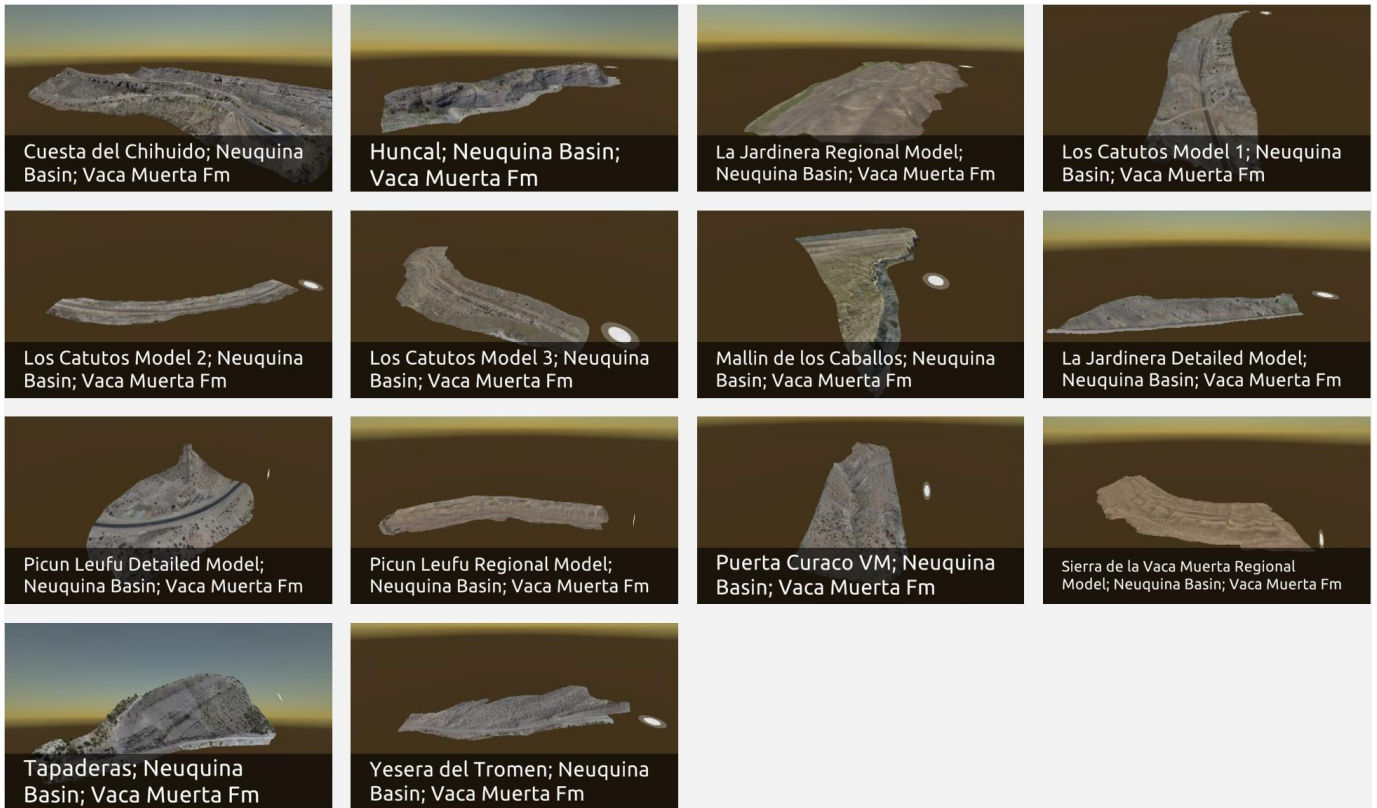
Imaged Reality, in collaboration with the Argentinian Drone survey firm, DroneXplora, is bringing the DroneXplora Catalogue of 3D outcrop models to Stratbox Desktop Cloud service. The catalogue includes 14 digital outcrop models from the Neuquen Basin, an important oil and gas producing sedimentary basin covering most of Neuquén Province in Argentina. The models cover areas of important geological interest for exploration and training of multidisciplinary teams.

The outcrop models are accessed directly in Stratbox Desktop after product subscription.

Terms and conditions of use apply.



Stratbox map showing the locations of the DroneXplora Catalogue

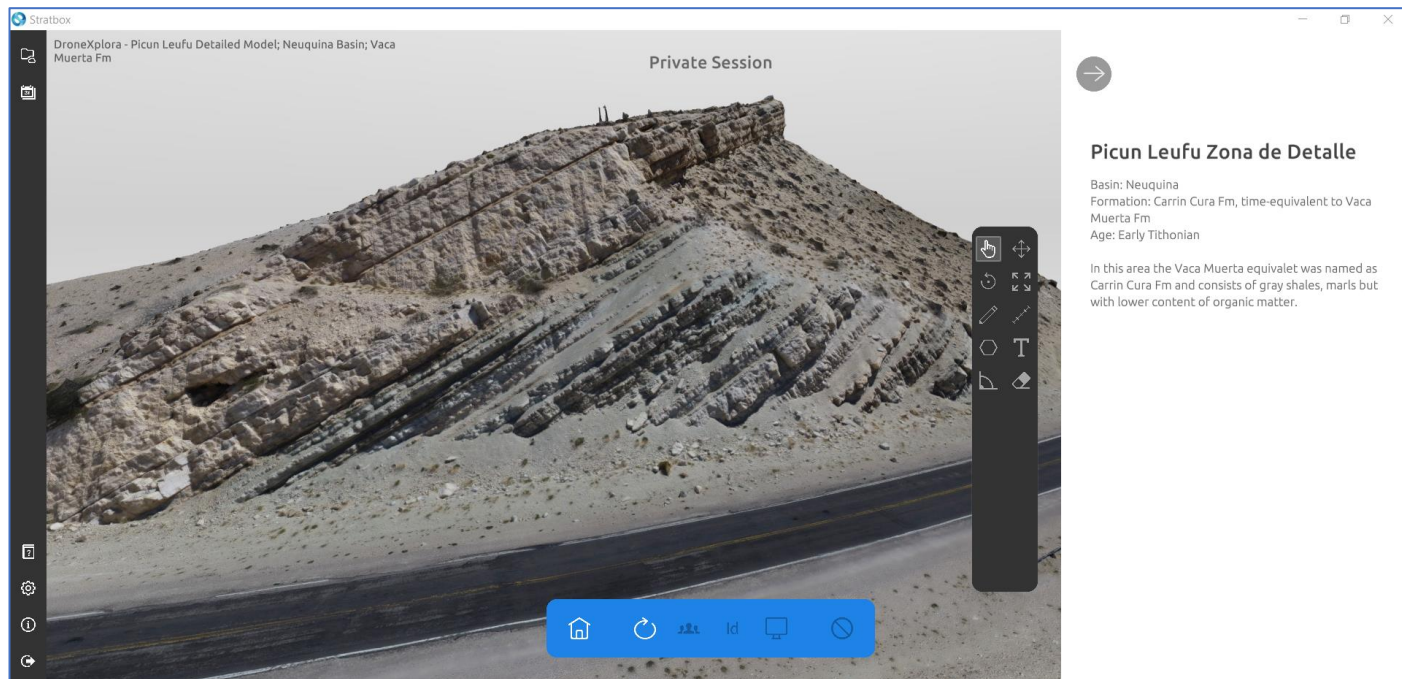
DroneXplora Collection 1

Collection

The collection includes a list of 14 models from the Neuquen basin in Argentina.

Covers formations and groups:

- Vaca Muerta Fm.
- Chachao Fm.
- Los Catutos Mbr.
- Carrin Cura Fm, time-equivalent to Vaca Muerta Fm.
- Los Molles Fm.

Example



Uninterpreted model in Stratbox viewer



info@imagedreality.com

www.imagedreality.com

*The DroneXplora Catalogue is available in Stratbox
Desktop version*